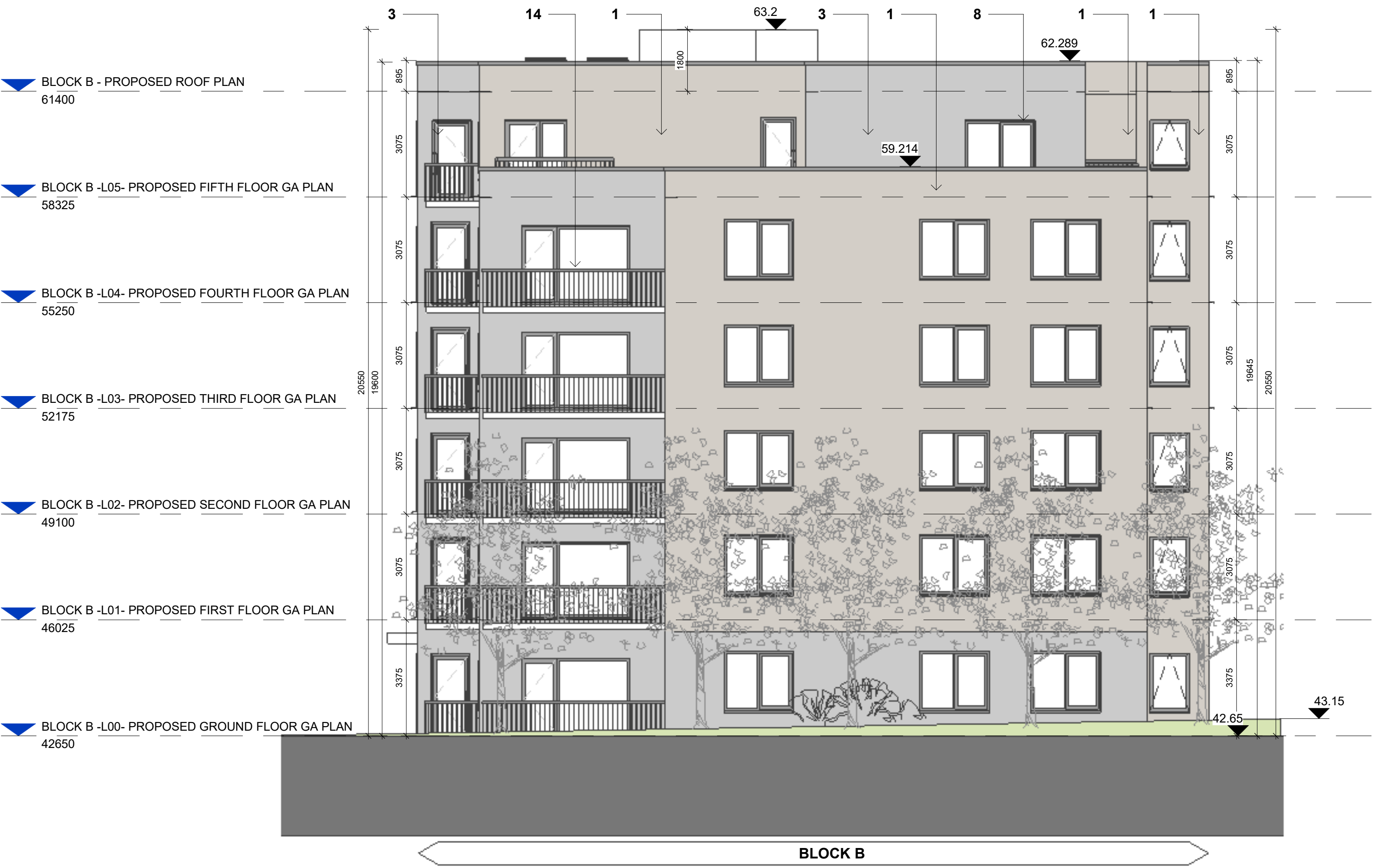
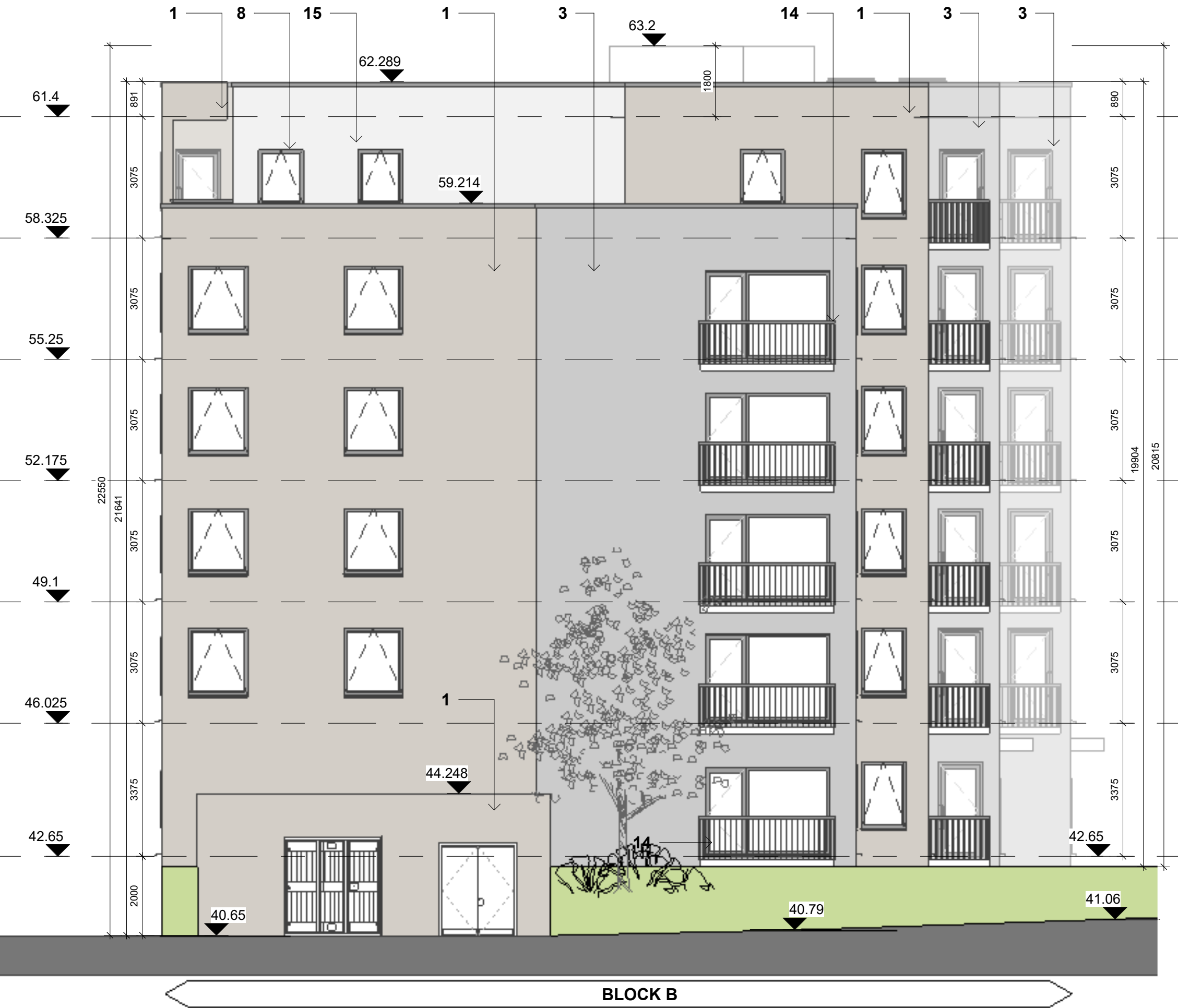


Material Legend

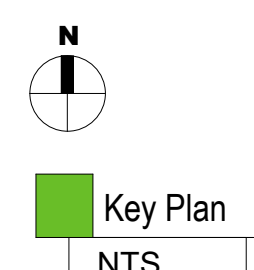
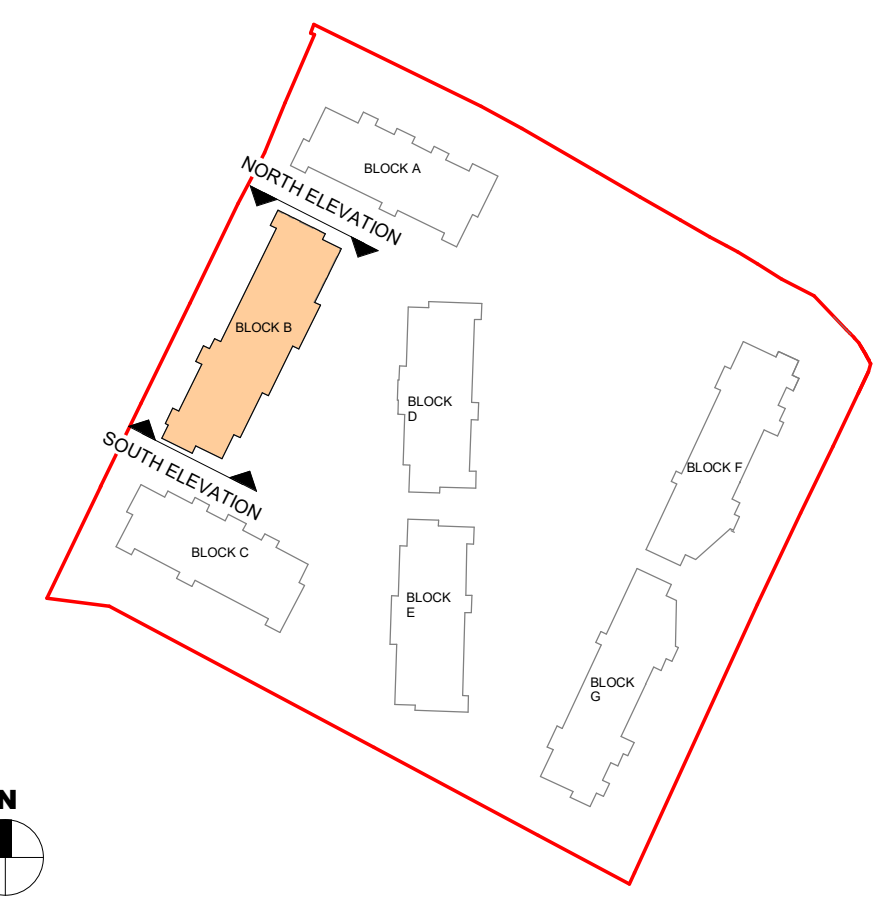
1. Oatmeal Brickwork
2. Glazed balustrade with power-coated metal handrails
3. Light Grey Brickwork
4. Powder Coated Aluminium Doble Glazed Curtain Wall
5. Selected Metal Cladding
6. Powder Coated Pressed Metal Coping Detail
7. Powder Coated Pressed Metal
8. Selected Window System to Selected Colour By Architect
9. Render Finishing Off White (Column detail)
10. Selected Limestone Cladding
11. Obscure Back-Painted Glazing
12. Charcoal Brickwork
13. Dark Grey Brickwork
14. Metal Railing Balustrades
15. Selected Off White Brick



1 BLOCK B - PROPOSED NORTH ELEVATION  
1 : 100



2 BLOCK B - PROPOSED SOUTH ELEVATION  
1 : 100



P02	30/08/2024	Final LRD Planning Application	LJ
P01	05/07/2024	Draft planning drawings	AB
Rev	Date	Description	Issued By

Project Stage

## PLANNING

Client:  
EW Property Limited

Project:  
Hartfield Place  
Swords Road, Whitehall, Dublin 9  
D9 C7F8

Drawing Title:  
BLOCK B - PROPOSED NORTH & SOUTH ELEVATIONS

Drawn AB	Checked AM	Paper Size A1	Scale As indicated	Date 01/17/24
Project No. PE18138	Drawing No. 2002	Classification	Revision P02	

File Name:  
PE18138-CWO-BB-ZZ-DR-A-2002

Purpose Code:  
Issued for Information

Acceptance Code:  
S - Issued



No.1 Sarsfield Quay, Dublin 7, D07 R9FH  
t: 01 518 0170 e: admin@cwoarchitects.ie  
Dublin | Cork | Galway | London | UK & Europe +  
www.cwoarchitects.ie

Please consider the environment before printing this sheet