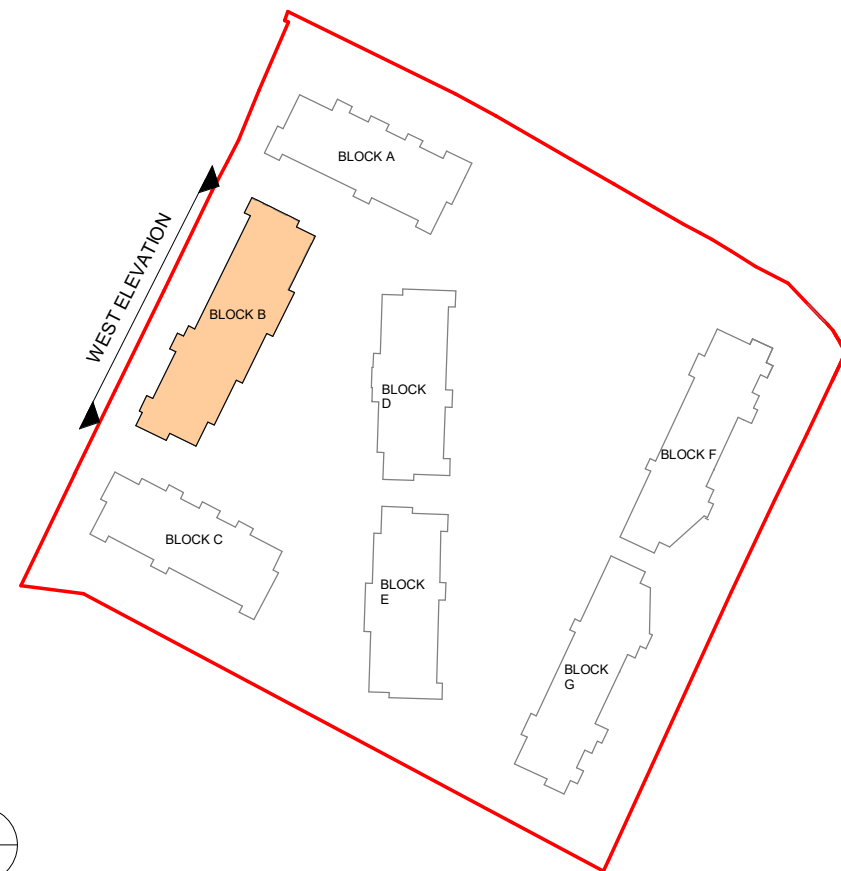




1 BLOCK B - PROPOSED WEST ELEVATION  
1 : 100

Material Legend

1. Oatmeal Brickwork
2. Glazed balustrade with power-coated metal handrails
3. Light Grey Brickwork
4. Powder Coated Aluminium Doble Glazed Curtain Wall
5. Selected Metal Cladding
6. Powder Coated Pressed Metal Coping Detail
7. Powder Coated Pressed Metal
8. Selected Window System to Selected Colour By Architect
9. Render Finishing Off White (Column detail)
10. Selected Limestone Cladding
11. Obscure Back-Painted Glazing
12. Charcoal Brickwork
13. Dark Grey Brickwork
14. Metal Railing Balustrades
15. Selected Off White Brick



Key Plan  
NTS

P02	30/08/2024	Final LRD Planning Application	LJ
P01	05/07/2024	Draft planning drawings	AB
Rev	Date	Description	Issued By

Project Stage

## PLANNING

Client:

EW Property Limited

Project:

Hartfield Place  
Swords Road, Whitehall, Dublin 9  
D9 C7F8

Drawing Title:

BLOCK B - PROPOSED WEST ELEVATION

Drawn	Checked	Paper Size	Scale	Date
AB	AM	A1	As indicated	@A1 01/17/24
Project No.	Drawing No.	Classification	Revision	
PE18138	2001		P02	

File Name:

PE18138-CWO-BB-ZZ-DR-A-2001

Purpose Code

Issued for Information

Acceptance Code

S - Issued



No.1 Sarsfield Quay, Dublin 7, D07 R9FH  
t: 01 518 0170 e: admin@cwoarchitects.ie  
Dublin | Cork | Galway | London | UK & Europe +  
www.cwoarchitects.ie

Please consider the environment before printing this sheet