

THE COPYRIGHT OF THIS DRAWING IS VESTED WITH CW O'BRIEN ARCHITECTS LIMITED AND MUST NOT BE COPIED OR REPRODUCED WITHOUT THE CONSENT OF THE COMPANY.

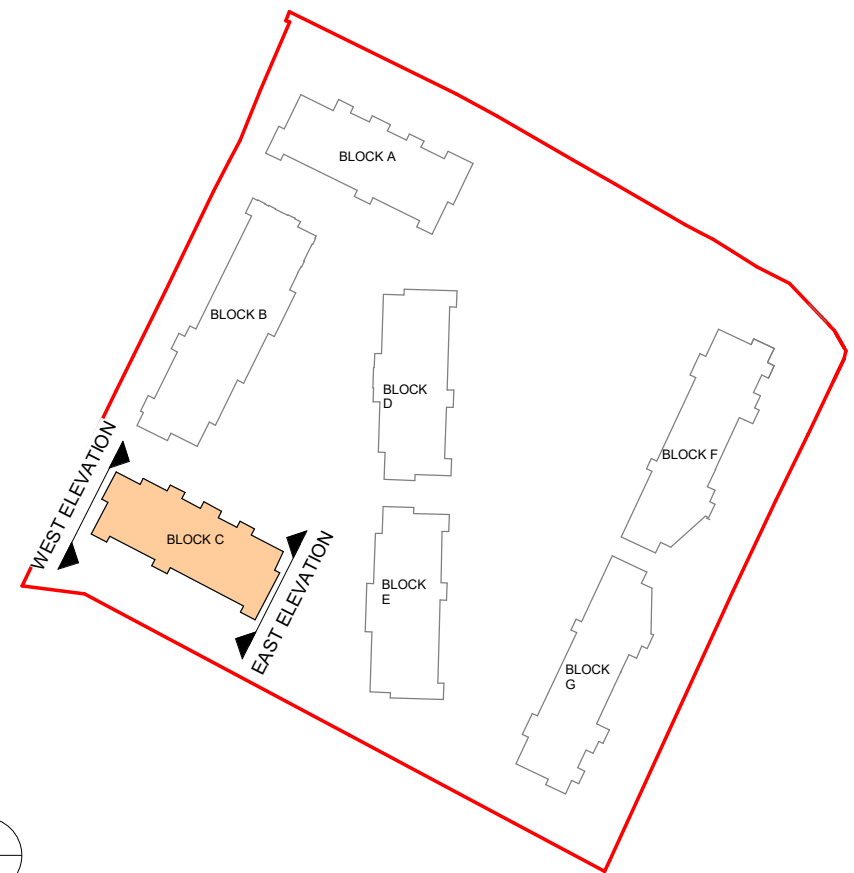
FIGURED DIMENSIONS ONLY TO BE TAKEN FROM THIS DRAWING. DO NOT SCALE.

ALL CONTRACTORS MUST VISIT THE SITE AND BE RESPONSIBLE FOR CHECKING ALL SETTING OUT DIMENSIONS AND NOTIFYING THE ARCHITECT OF ANY DISCREPANCIES PRIOR TO ANY MANUFACTURE OR CONSTRUCTION WORK.

NOTES:

Material Legend

- Oatmeal Brickwork
- Glazed balustrade with power-coated metal handrails
- Light Grey Brickwork
- Powder Coated Aluminium Doble Glazed Curtain Wall
- Selected Metal Cladding
- Powder Coated Pressed Metal Coping Detail
- Powder Coated Pressed Metal
- Selected Window System to Selected Colour By Architect
- Render Finishing Off White (Column detail)
- Selected Limestone Cladding
- Obscure Back-Painted Glazing
- Charcoal Brickwork
- Dark Grey Brickwork
- Metal Railing Balustrades
- Selected Off White Brick



Key Plan
NTS

P02	30/08/2024	Final LRD Planning Application	LJ
P01	05/07/2024	Draft planning drawings	AB
Rev	Date	Description	Issued By

Project Stage

PLANNING

Client:

EW Property Limited

Project:

Hartfield Place
Swords Road, Whitehall, Dublin 9
D9 C7F8

Drawing Title:

BLOCK C - PROPOSED EAST & WEST
ELEVATIONS

Drawn AB	Checked AM	Paper Size A1	Scale As indicated	Date 01/17/24
Project No. PE18138	Drawing No. 2002	Classification	Revision P02	

File Name:

PE18138-BC-ZZ-DR-A-2002

Purpose Code

Issued for Information

Acceptance Code

S - Issued

C+W O'BRIEN
ARCHITECTS

No.1 Sarsfield Quay, Dublin 7, D07 R9FH
t: 01 518 0170 e: admin@cwoarchitects.ie
Dublin | Cork | Galway | London | UK & Europe +
www.cwoarchitects.ie

Please consider the environment before printing this sheet