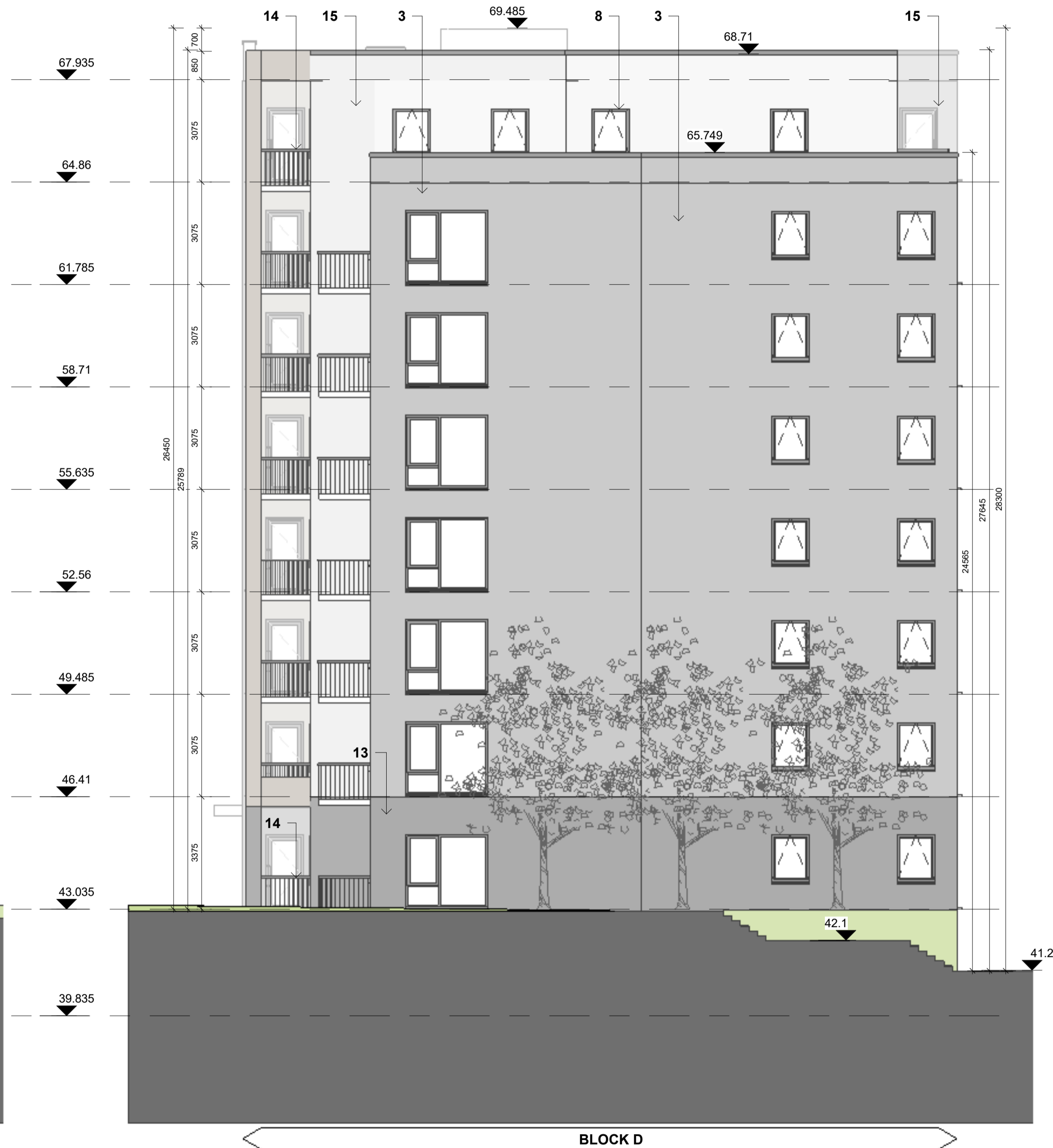


Material Legend

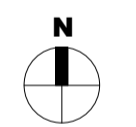
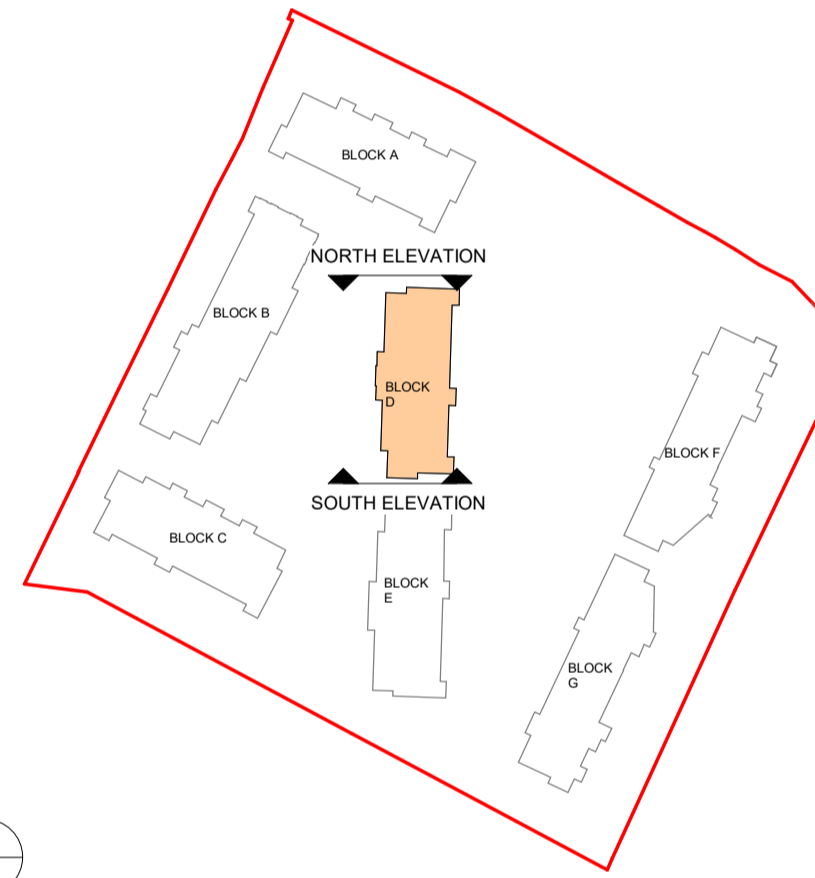
1. Oatmeal Brickwork
2. Glazed balustrade with power-coated metal handrails
3. Light Grey Brickwork
4. Powder Coated Aluminium Double Glazed Curtain Wall
5. Selected Metal Cladding
6. Powder Coated Pressed Metal Coping Detail
7. Powder Coated Pressed Metal
8. Selected Window System to Selected Colour By Architect
9. Render Finishing Off White (Column detail)
10. Selected Limestone Cladding
11. Obscure Back-Painted Glazing
12. Charcoal Brickwork
13. Dark Grey Brickwork
14. Metal Railing Balustrades
15. Selected Off White Brick



1 BLOCK D - PROPOSED NORTH ELEVATION
1 : 100



2 BLOCK D - PROPOSED SOUTH ELEVATION
1 : 100



Key Plan
NTS

Rev	Date	Description	Issued By
P02	30/08/2024	Final LRD Planning Application	LJ
P01	08/07/2024	Draft planning drawings	AB

Project Stage

PLANNING

Client:
EW Property Limited

Project:
Hartfield Place
Swords Road, Whitehall, Dublin 9
D9 C7F8

Drawing Title:
BLOCK D - PROPOSED NORTH & SOUTH ELEVATIONS

Drawn	Checked	Paper Size	Scale	Date
AB	AM	A1	As indicated	01/12/24

Project No.	Drawing No.	Classification	Revision
PE18138	2000		P02

File Name:
PE18138-CWO-BD-ZZ-DR-A-2000

Purpose Code

Issued for Information

Acceptance Code

S - Issued



No.1 Sarsfield Quay, Dublin 7, D07 R9FH
t: 01 518 0170 e: admin@cwoarchitects.ie
Dublin | Cork | Galway | London | UK & Europe +
www.cwoarchitects.ie

Please consider the environment before printing this sheet