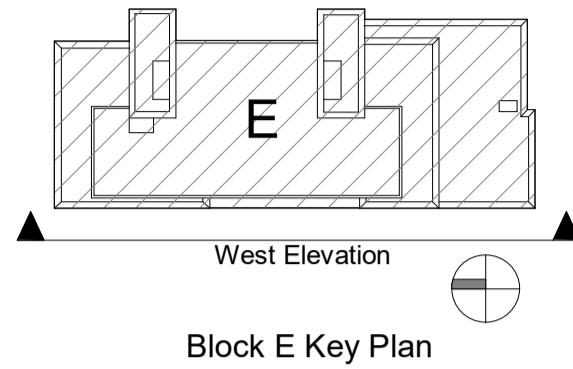


## DESIGN INTENT DRAWING



1 GA - West Elevation

1 : 100

### Material Legend

- 1) Oatmeal Brickwork
- 2) Glazed balustrade with power-coated metal handrails
- 3) Grey Brickwork
- 4) Powder Coated Aluminium Double Glazed Curtain Wall
- 5) Zinc Standing Seam Cladding
- 6) Powder Coated Pressed Metal Coping Detail
- 7) Powder Coated Pressed Metal
- 8) Powder Coated Aluminium Double Glazed Windows
- 9) Render Finishing Off White
- 10) Selected Limestone
- 11) Obscure Back-Painted Glazing
- 12) Charcoal Brickwork

| Rev | Description | Date | Dr by | App by |
|-----|-------------|------|-------|--------|
|-----|-------------|------|-------|--------|

Project Stage

## PLANNING

Client:

Eastwise Construction Ltd.

Project:

Hartfield Place  
Swords Road, Whitehall, Dublin 9  
D09 C7F8

Drawing Title:

BLOCK E - West Elevation GA - 472 Units

| Drawn | Checked | Paper Size | Scale       | Date      |
|-------|---------|------------|-------------|-----------|
| DP    | WP      | A1         | 1 : 100 @A1 | Mar. 2022 |

| Project No. | Drawing No. | Classification | Revision |
|-------------|-------------|----------------|----------|
| HARTPL      | 052520      |                |          |

File Name  
HARTPL-CWO-BE-ZZ-DR-A-052520

Status:  
S2-Suitable For Information

PERMITTED SHD  
(Subject To Conditions)  
Reg Ref: ABP-313289-22

**C+W O'BRIEN**  
ARCHITECTS

No.1 Sarsfield Quay, Dublin 7, D07 R9FH  
t: 01 518 0170 e: admin@cwoarchitects.ie  
Dublin | Cork | Galway | London | UK & Europe +  
www.cwoarchitects.ie

Please consider the environment before printing this sheet