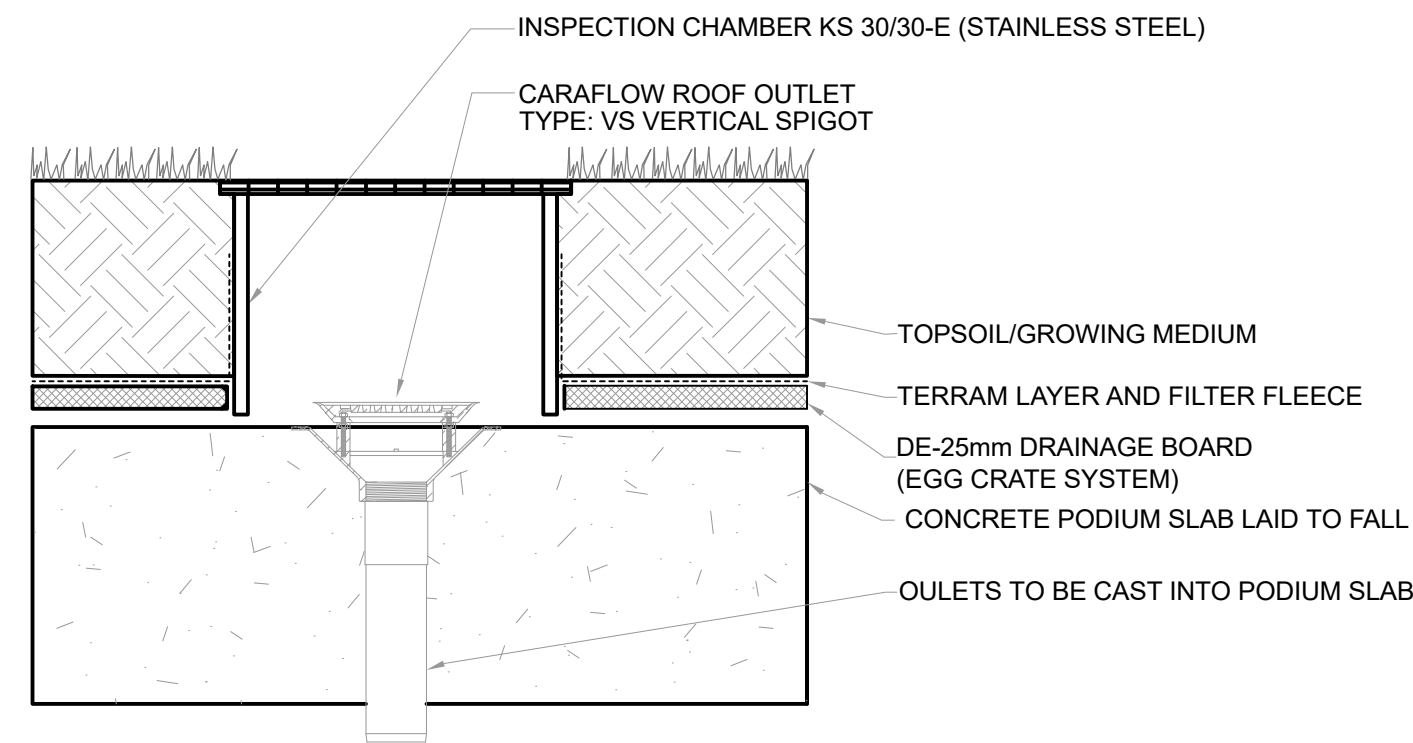
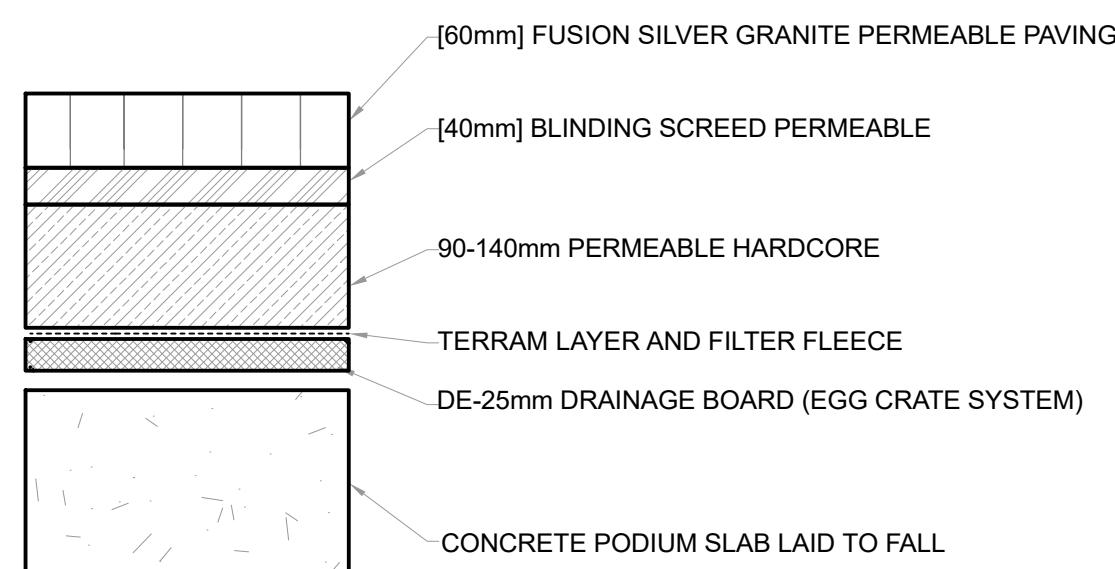


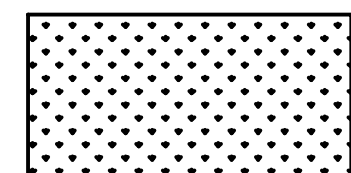
DRAINAGE OUTLET DETAIL  
PODIUM DECK PAVED AREA



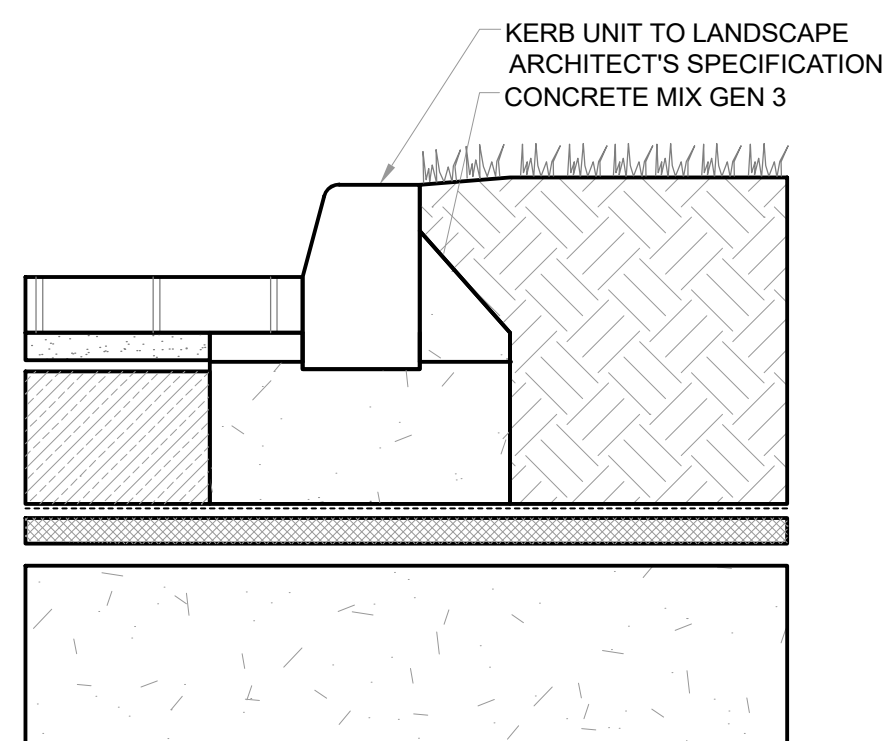
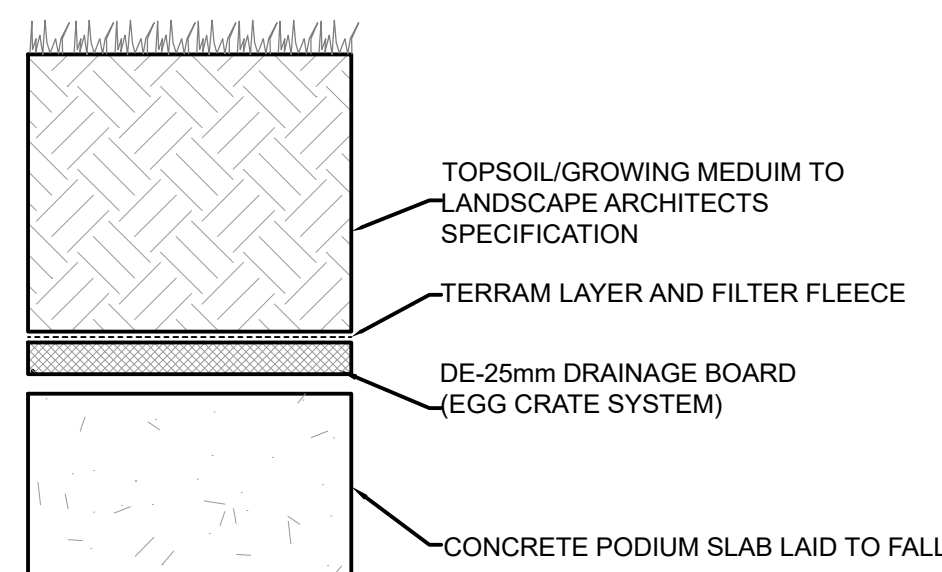
**PODIUM DECK**  
Permeable Paving Areas



DRAINAGE OUTLET DETAIL  
PODIUM DECK GRASS PLANTED AREA

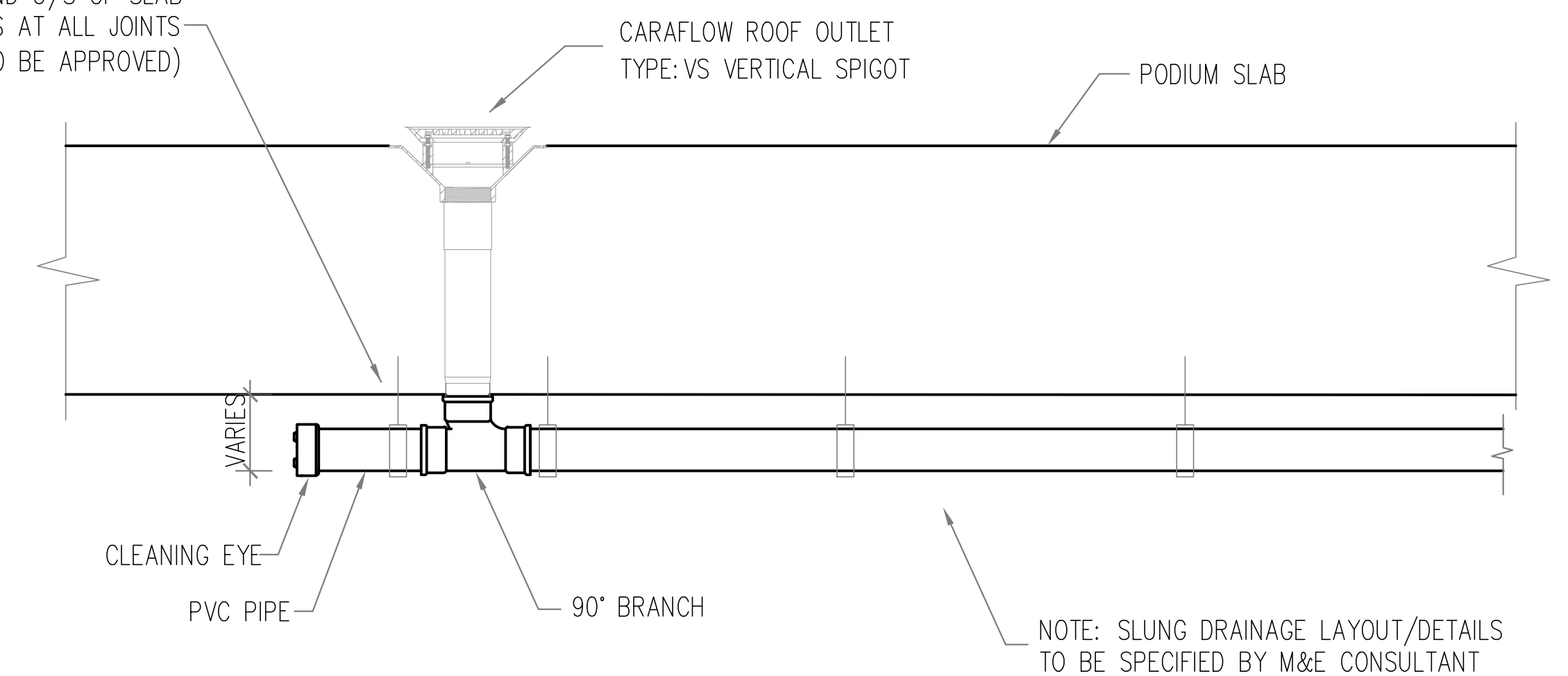


**PODIUM DECK**  
Grassed/Planted Areas



**PODIUM DECK**  
PERMEABLE PAVING AREA TO  
GRASSED/PLANTED AREA TRANSITION

ALL PIPES FIXED TO WALLS AND U/S OF SLAB  
WITH PROPRIETARY PIPE FIXINGS AT ALL JOINTS  
AND 1.2M CENTRES MIN (TO BE APPROVED)



## TYPICAL SECTION THROUGH SLUNG DRAINAGE

SCALE: NTS

issued for  
**PLANNING**

### DIMENSIONS

Figured dimensions only to be taken from this drawing.  
All dimensions to be checked on site.  
Architects to be informed immediately of any  
discrepancies before work proceeds.

### © COPYRIGHT

This drawing and any design hereon is copyright of  
JOR Consulting Engineers and must not be reproduced  
in whole or in part without their express written consent.

### NOTES:

REV	DATE	DETAILS
1	23.09.24	Issued for LRD application
0	AUG.24	Draft issue
REV	DATE	DETAILS

**jor** Joseph O'Reilly  
Consulting Civil & Structural Engineers

Tel: 046 9077032 Fax: 046 9077932  
Email: [mail@jor.ie](mailto:mail@jor.ie) Web: [www.jor.ie](http://www.jor.ie)  
Unit 1, St. Therese's Place, Flowerhill, Navan, Co. Meath

CLIENT EW Property Ltd		TITLE LRD: Surface Water Drainage Details Sheet 2 of 5	
PROJECT Hartfield Place, Swords Road, Whitehall, Dublin 9, D09 C7F8	SCALE As shown @ A1	DATE CREATED Sept 2024	DRAWN BY: PC CHECKED BY: MS
Drawing no. L24-01-LRD-026			REV 1